



WHAT IS LASSO?

Learning About STEM Student Outcomes (LASSO) is an NSF-funded online assessment tool developed by the Learning Assistant Alliance to support STEM instructors and researchers. The platform administers assessments online to students, frees up class time, and automatically analyzes the data.

WHO IS IT FOR?

INSTRUCTORS

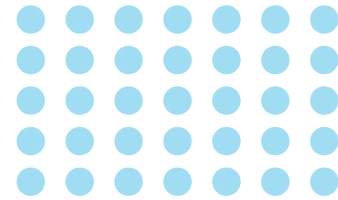
who want:

- Online course assessment tools
- A platform that is streamlined and free to use
- Pretests and posttests to identify instructional successes and areas for improvement.
- Downloadable data and interactive analysis

RESEARCHERS

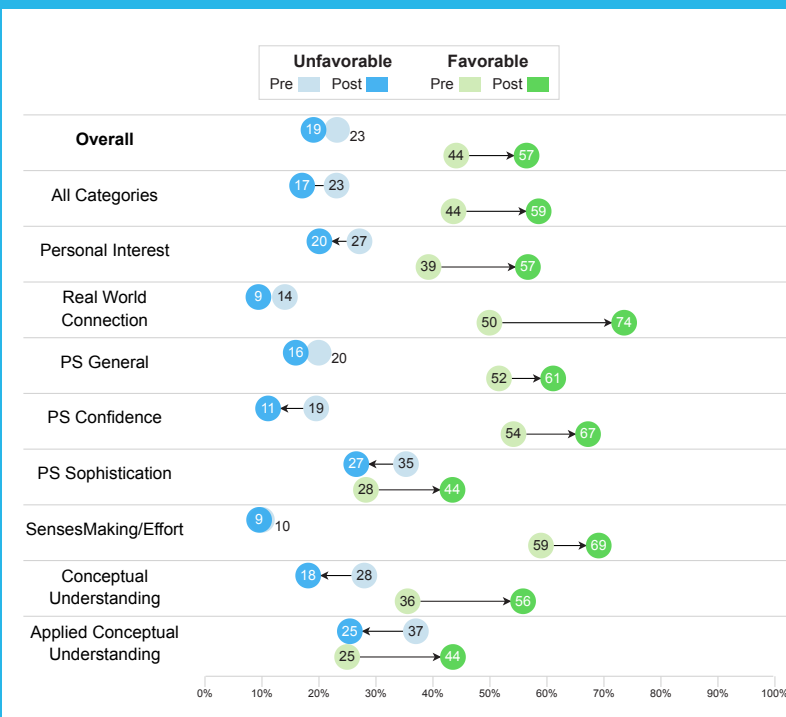
who need:

- Access to large-scale, multi-disciplinary data from diverse institutions
- Student demographics, performance, and course-level data
- To host and disseminate their instrument for free



“The LASSO platform has been a wonderful resource for internal program assessment in my department. It’s easy to use and eliminates the need for paper assessments. LASSO also provides useful reports at the end of the semester showing student learning gains in each course, and I can download the raw data for my own analyses. I highly recommend using LASSO to assess student learning.”

Trevor Smith, Ph.D.
Assistant Professor of
Physics, Rowan University

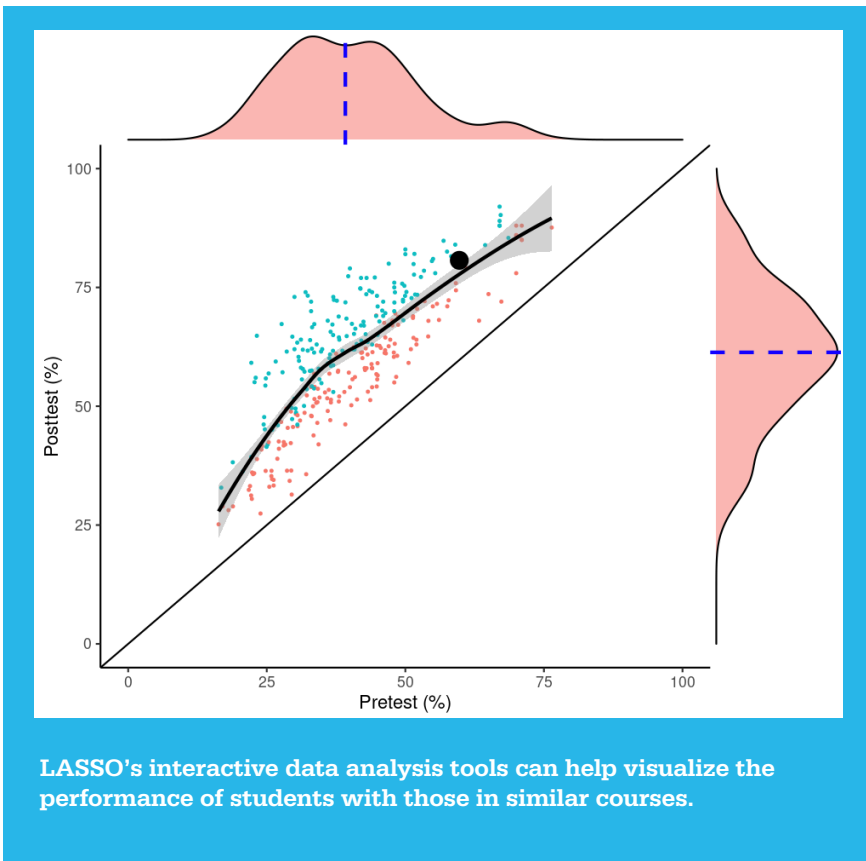


LASSO can automatically generate reports that show shifts in students knowledge, attitudes, and identities.

WHY LASSO?

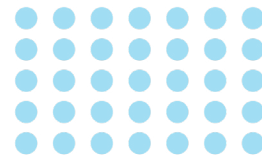
The LASSO platform's purpose is to support instructors in implementing evidence-based teaching practices in their courses. It does this by providing them with simple, accurate, and reliable assessments for their courses and to support research on STEM instruction.

LASSO enables instructors to assess their courses, interpret results from their assessments, and view documentation summarizing their student outcomes. Large-scale, multi-disciplinary data collection allows researchers to further understand and support student learning in STEM.



“LASSO is a great tool to compare students term by term, and to see the growth.”

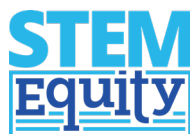
Martina Bode,
Math faculty member
Northwestern University



LEARN MORE



Supported by National Science Foundation grants #1525338 and #1928596



STEM Equity's mission is to empower researchers and instructors in the STEM education field to contribute to, enrich, and diversify the Discipline Based Education Research literature base.

Visit stemequity.net/lasso/ or scan the QR Code for more information